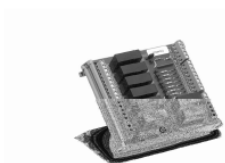


System accessories

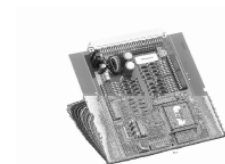
Order-No. RB08



Relay board with 8 relay

- 8 potential free change over contacts are provided with screw terminals
- controlling via active-low signals (e.g. alarm outputs) by the MCU
- with LEDs for setting-off control
- Technical specification:
 - Operating voltage: 21-28 Vdc
 - Standby current: 5 mA
 - Alarm current: 30mA per relay
 - Contact data: 250V/5A per switch
 - Dimensions (H x W): 97,5 x 113 mm

Order-No. AM32



Alarm module 32-OC

- CPU with 32 outputs for zone alarms
- Installed inside FCP as plug-in or externally through connector PCB (max. 20m distance)
- Application: mimic panel or controlling outputs in case of fire
- Addressable by dip-switch. This enable to use several modules.
- Technical specification:
 - Operating voltage: 21-28 Vdc
 - Standby current: 30 mA
 - Interface: IIC-Bus and RS-232
 - OC-outputs: low active, max 24V/90mA

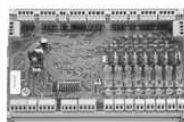
Order-No. OM04



Monitored 4 outputs module for sounder/beacons

- PCB controlling 4 monitored outputs for signal transmitter
- Mounted inside or outside MCU
- Connection for LEDs to display the activation
- Outputs lines monitored for short-circuit or break
- One LED per output signalling fault condition
- Application: evacuation sounders
- Each line fused with 400mA
- Technical specification:
 - Operating voltage: 21-28 Vdc
 - Standby current: 58 mA
 - Alarm power: 400mA per output (24VDC)
 - EOL resistors: 1kOhm / 1W per output
- Dimensions (H x W): 125 x 130 mm

Order-No. OM08



Monitored 8 outputs module for sounder/beacons

- PCB controlling 8 monitored outputs for signal transmitter
- Mounted inside or outside MCU
- Connection for LEDs to display the activation
- Outputs lines monitored for short-circuit or break
- One LED per output signalling fault condition
- Application: evacuation sounders
- Each line fused with 400mA
- Technical specification:
 - Operating voltage: 21-28 Vdc
 - Standby current: 58 mA
 - Alarm power: 400mA per output (24VDC)
 - EOL resistors: 1kOhm / 1W per output
- Dimensions (H x W): 175 x 107,5 mm

Order-No. LCD933**LCD Repeater display, 10mm font size, DBM**

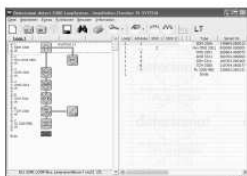
- Version extra flat design housing composed of brushed stainless steel
- Foil front plate with MCU-design, colour RAL 9007
- LCD fire indication panel with 4 x 20 symbols and 10mm font size
- Buzzer, collective-LEDs for alarm, fault and switch off
- Integrated CPU board with Bit bus-interface
- Texts stored in MCU are automatically transferred to this repeater. No further programming required
- Technical specification:
 - Operating voltage: 21-28 Vdc
 - Standby current: 129 mA
 - Interface: Bit Bus
 - Full range: max. 13,2 km
 - Speed: max. 375 kBaud
 - Display: 4 lines, 20 characters each, font size 10mm
 - Dimensions (H x W x D): 295 x 240 x 43 mms

Order-No. ILP933**Buil-in thermal printer**

- for all types of MCU (301,304,310,316)
- controlled by RS232 from main control unit
- printer with 24 characters per line
- 58mm per width incl. controller, 8k RAM memory
- with black front completely mounted and tested in MCU

Order-No. TM933**Telephone Modem for MCU**

- telephone modem
- directly connected to MCU
- completely installed and configured
- transmission to PC at 9600 Baud
- power supply included
- telephone connection has to be available in proximity

Order-No. I-Check**Windows-based I-Check service, diagnosis and installation SW**

- Powerful and easy-to-use software for servicing, diagnosis, management and installation
- Read out of entire system configuration
- Graphic display of:
 - loop/line topology
 - short-circuit
 - interruptions
- Access to all data for each Profi Loop device:
 - smoke measurement
 - alarm status

Order-No. DBMTool**Photograph not available****DBM Tool programming software**

- for PC or notebook
- software runs on Windows (Win95/98/2000/NT/XP)
- directly connection via RS232 to MCU
- incl. options for importing customer's specific texts and reading out event memory
- software version for panels without modem

Order-No. DBM-SK

DBM Tool programming software (Software Key)

Photograph not available

- same sw as above but includes also:
- remote operation and diagnosis (e.g. via telephone line) of MCU
- option for programming MCU via modem
- repetition of MCU onto monitor (1:1)
- display of current messages and events
- can be used with all control panels with a modem

Network accessories

Order-No. MIC833-1

**Display and remote control panel in wall mounting housing**

- Display and control all connected MCUs within a network
- wall mounting housing covered with foil, built-in keyboard incl. numeric keypad and 4 lines LCD
- connected to the fire detection system with Bit bus data cable
- delivery includes Bit bus interface in a surface mounting housing made of steel sheet
- strictly necessary as a coordinating processing unit in combination with a central unit-network
- option: transmission unit (TU) interface
- Technical specification:
 - Operating voltage: 21-29 Vdc
 - Current consumption: 132 mA / 196mA
 - Interfaces Bit bus: max. 375 Kbaud / 13,2km cable length 2xRS232
 - Dimensions (H x W x D): 262 x 420 x 83 mm
 - Weight: 6 kg

VdS approval No.: G 297072

Order-No. MIC833-2

**Display and control panel, 19" installation, 6 HE**

- technical data as order-No. MIC833-1
- housing available on request

Order-No. LK xx MIC

Photograph not available

Language kit for MIC module

Panel firmware language kit. Check with Fittich technical support for language availability and delivery time.

Please replaced XX with following codes:

- GB - English
- D - German
- IT - Italian
- CS - Serbian
- SK - Slovak
- CZ - Czech
- HU - Hungarian
- RU - Russian

Order-No. LM32-INT**Detector zone-LED interface for ABF module**

- to connect zone LEDs to main control panel
- Bit bus participant (addressable)
- max. 192 zone-LEDs per interface possible
- more than one interface in a network possible
- connected to 32 zones display LM32 as LED module
- max. 6 pieces per interface
- Technical specification:
 - Operating voltage: 21-29 Vdc
 - Current consumption: 90 mA
 - Interfaces Bit bus: max. 375 Kbaud / 13,2km cable length 2xRS232
 - Dimensions (H x W): 130 x 125 mm
 - Weight: 0,3 kg w/o batteries

Order-No. BBI64**Bit bus interface**

- for MCU304
- interlink for fire control panels or control units with a 4 wires RS485 interface
- up to 13,2 km at 62,5kbaud and up to 64 participant
- current consumption app.50 mA

Order-No. BBI64-PC**Bit bus PC-card**

- PC card with integrated Bit bus interface for all IBM compatible PCs 386 and higher
- this Bit bus PC card is needed to connect the PC control file to MCU
- it allows a detailed analysis of a connected loop and the simulation of messages of all kinds.
- incl. analysing-software

Order-No. BBI-CPU**Bit Bus - CPU**

- extension of Order-No. BBI-32/BBI-16
- Up to 8 extensions possible, max 256 outputs per Bit bus CPU
- Technical specification:
 - Operating voltage: 21-28 Vdc
 - Current consumption: 175 mA
 - Interfaces Bit bus: max. 375 Kbaud / 13,2km cable length, 4 wires
 - Outputs: OC 24V / max. 90mA active low

Order-No. LCON-1**Fiber optic converter begin-end of network**

- for MCU304 and MCU316, GST connector
- interlink for fire control panels or control units with a 62,5 (50)/125 µm fiber optic
- up to 2600m (1400m)
- current consumption app.200 mA at 24VDC

Order-No. LCON-2**Fiber optic converter daisy chain**

- for MCU304 and MCU316, GST connector
- interlink for fire control panels or control units with a 62,5 (50)/125 µm fiber optic
- up to 2600m (1400m)
- current consumption app.200 mA at 24VDC

Order-No. BBI-32

**32 OC outputs extension module**

- extension of Order-No.BBI-CPU
- Up to 8 extensions possible, max 256 outputs per Bit bus CPU
- Technical specification:
Standby current: 17mA

Order-No. BBI-16

**16 relays outputs extension module**

- extension of Order-No.BBI-CPU
- Up to 8 extensions possible, max 128 outputs per Bit bus CPU
- Technical specification:
Standby current: 16 mA
Per relay: 2 mA

Order-No. BBI-R

**Bit Bus Repeater**

- repeater component extending Bit Bus signals longer than 400m (375kBaud) or 1200m (62.5kBaud). Incl. Power unit 230VAC / 12VDC
- Technical specification:
Operating voltage: 2230 VAC / 50-60 Hz
Power consumption: 4 VA
Interface Bit bus: 4 wires
Dimensions (H x W x D): 122 x 66 x 54 mm

Order-No. BBI-M

**Bit bus modem**

- necessary for programming of the Bit Bus module via DBMTOOL
Order-No.BBI-CPU/BBI-32 and BBI-CPU/BBI-16

Order-No. BBI-C

Photograph not available

Sub-D-Bit bus cable 9 wire, Type 100

- Sub Bit Bus cable allows to program the loop device through a Bit Bus modem Order-No.BBI-M

Order-No. VD Basic 11**Visual Detect Basic Software**

Basic Graphic Maps software for one control panel and one workstation

- runs under Windows 2000/XP
- network compatible (server-client structure)
- modular structure
- full graphic display
- simulation tool (to test detectors and programmed system connections)
- comprehensive operator and rights management
- free programmable alarm management, procedure-plans
- automatic procedure-plans execution
- German, English, Russian languages
- print-out function (i.e. Fire Brigade routing card, unit location plans)
- system consists of a development and runtime interface
- help function for development and runtime interface
- bitbus-connection via internal ISA-bitbus card
- password can be modified during software log-on
- data encoding between and clients
- detector data can be generated and read-in via the import tool from dpt-program
- authorization for one workstation and one fire control panel
- stand-alone possible, as data transmission between server & client via TCP/IP protocol
- free creation of announcement
- route plans readable in all common CAD formats
- screenshots and route cards can be printed automatically or manually

Order-No. VD UE 1**Visual Detect User Expansion**

One workstation expansion kit - for the expansion of one workstation /user in the TCP/IP network

Photograph not available

- multiple workstations-expandable by one
- possibility to work in the network
- message notification and "send messages"
- operator specific classified messages and rights possible

Order-No. VD PE 1**Visual Detect Panel Expansion**

One fire control panel expansion kit - for the expansion of one panel in the BitBus network

Photograph not available

- expandable by one fire control panel unit each
- a maximum of 20 units can be managed
- operator specific classified messages and rights possible

Order-No. VD CE 1**Visual Detect Operation Expansion**

license kit - for the remote control function expansion via visualization software

Photograph not available

Order-No. VD M I**Visual Detect Interface Management System**

license kit - interface to building management system (BMS) for data support

Photograph not available